

2 SONATE

1. Sonata in G Major GT 4.G01

Adattamento di
Matteo SCHÖNBERG

Giuseppe TARTINI
(1692–1770)

Andante

3

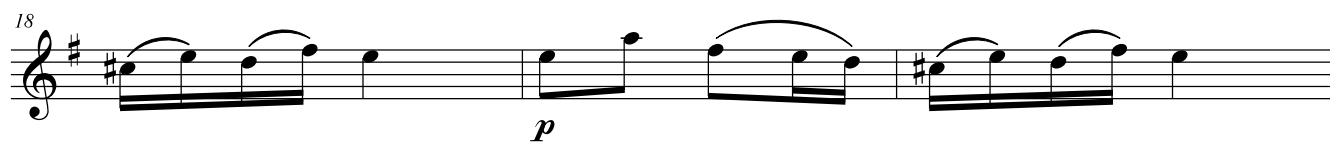
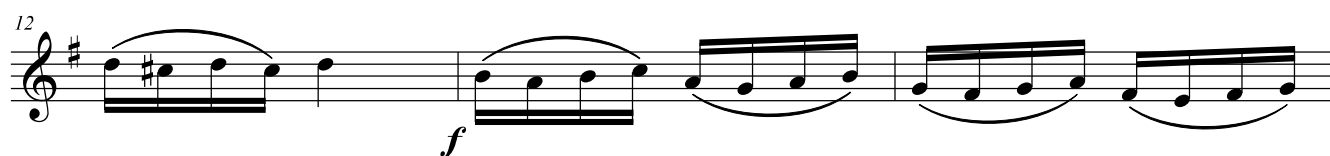
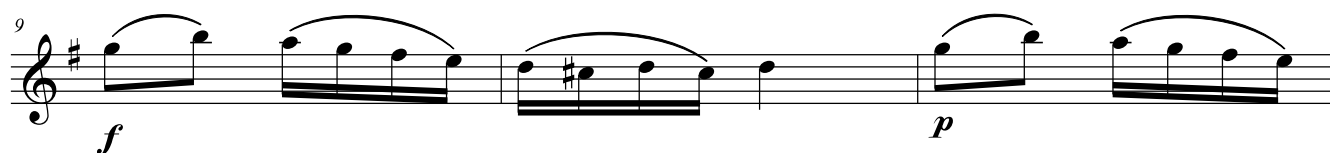
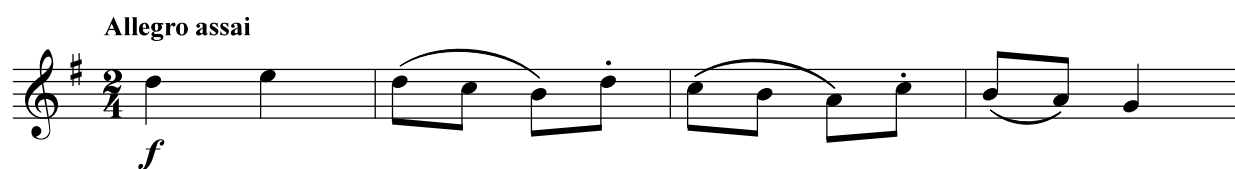
5

7

9

11

13



21 *f* *p*

24 *f*

27 *tr*

30

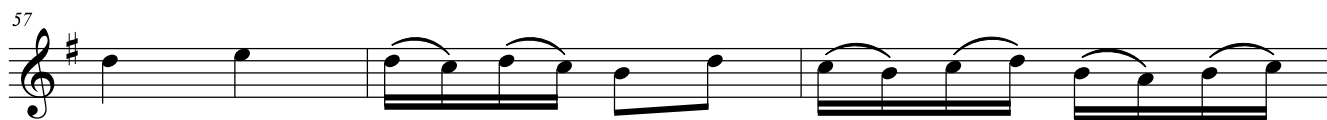
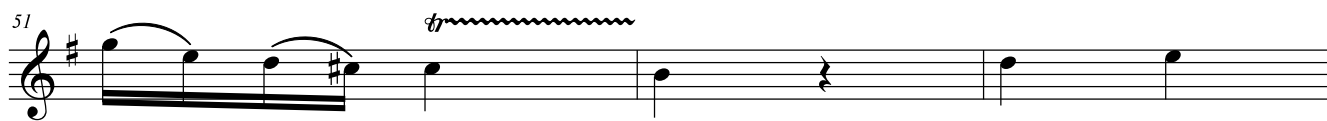
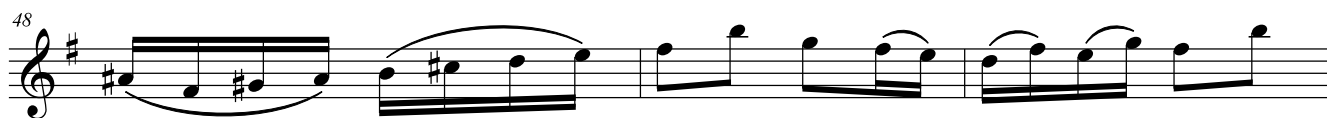
33

36

39

42

45



2. Sonata in C Major GT 4.C04

Andante

5

9

13

16

19

23

27

31

Allegro assai

A musical score for a piece titled "Allegro assai". The score is written on a single staff in treble clef, with a key signature of one sharp (F#) and a common time signature (C). The tempo is indicated as "Allegro assai". The score consists of nine measures, each spanning two staves. The first measure starts with a treble clef and a key signature of one sharp. The second measure starts with a treble clef and a key signature of one sharp. The third measure starts with a treble clef and a key signature of one sharp. The fourth measure starts with a treble clef and a key signature of one sharp. The fifth measure starts with a treble clef and a key signature of one sharp. The sixth measure starts with a treble clef and a key signature of one sharp. The seventh measure starts with a treble clef and a key signature of one sharp. The eighth measure starts with a treble clef and a key signature of one sharp. The ninth measure starts with a treble clef and a key signature of one sharp. The score ends with a double bar line and repeat dots.

4

7

10

13

17

20

23

26